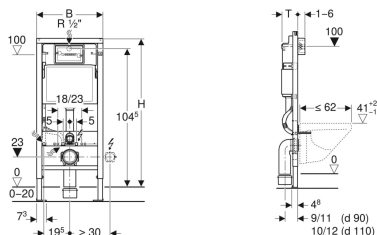


**Geberit Duofix frame for wall-hung WC, 112 cm, with Delta concealed cistern 12 cm, Delta20 flush plate**



**Application purposes**

- For drywall construction
- For installation in part or room-height prewall installations
- For installation in room-height installation walls
- For wall-hung WCs with connection dimensions in accordance with EN 33:2011
- For wall-hung WCs with projection up to 62 cm
- For floor constructions 0–20 cm

**Characteristics**

- Statically self-supporting frame, protected against corrosion with powder coating
- Frame top open
- Frame with  $\varnothing 9$  mm drilling holes for fastening in wood frame construction
- Frame with holes to receive Geberit Duofix wall anchors for elements with frame top open
- Frame prepared for support brackets for WC ceramic appliances with small contact surfaces
- Galvanized feet

**Scope of delivery**

- Angle stop valve R 1/2", with adaptor ring
- Protection box for service opening, made of polystyrene foam
- 2 distance bolts
- Geberit Delta20 flush plate for dual flush
- 2 wall anchors
- Connection set for WC,  $\varnothing 90$  mm

- Feet adjustable 0–20 cm
- Foot plates made of plastic
- Foot plate depth suitable for installation in U-profiles UW 50
- Connection bend can be mounted without tools
- Concealed cistern with front actuation
- Concealed cistern, fully insulated against condensation
- Cistern fulfils standard requirements in accordance with EN 14055, Class II
- Immediate post flush possible with factory setting
- Water supply connection on the rear or top centre
- With conduit pipe for feed pipe for Geberit AquaClean shower toilets and for connection cable
- Fastening option for electrical connection

**Technical data**

Operating temperature, water max.	25 °C
Flush volume, factory setting	5.8 / 3 l
Flush volume large, adjustment range	4 / 4.5 / 6 / 7.5 l
Flush volume small, adjustment range	2–4 l
Height-adjustable	No

- Connection bend 90° made of PE-HD,  $\varnothing 90$  mm
- Adaptor socket made of PE-HD,  $\varnothing 90 / 110$  mm
- 2 protection plugs
- Crossbar for panelling support
- 2 threaded rods M12
- Fastening material

Art. no.	Colour / surface	B	H	T
458.118.21.2	gloss chrome-plated	50 cm	112 cm	12 cm

**Accessories**

- Geberit set of support brackets for WC ceramic appliances with small contact surfaces